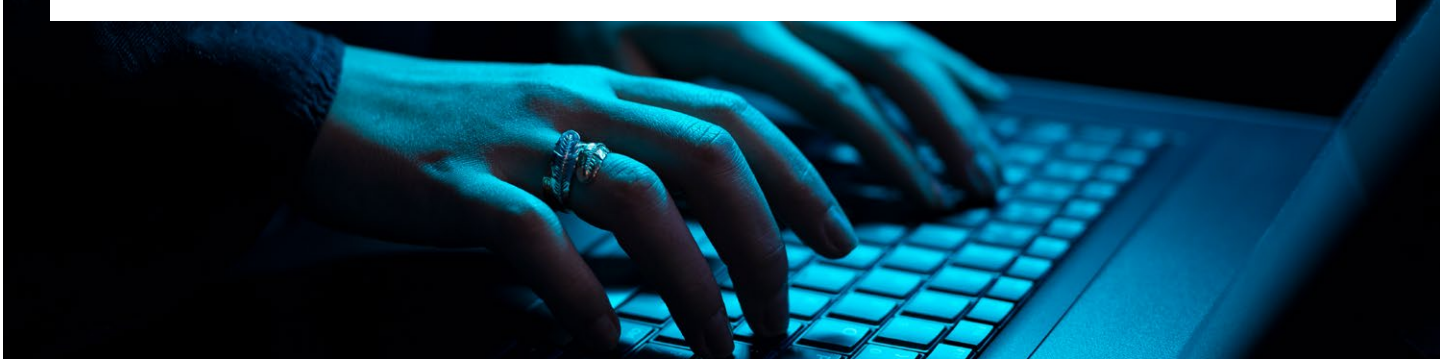


## A State-of-Art 360° Point-of-Care (POC) Testing Platform

Mondialab Pro enables healthcare providers to deliver agile lab-on-a-chip technologies, carry out accurate testing and diagnostics, and leverage robust data management. It uses lateral-flow-immunoassay (LFIA) rapid-test technology to carry the initial screening for hundreds of diseases and health conditions.



Eliminates human-error



Agile data management



Easy portability



Customizable

## Mondialab Pro 360° Platform

- **kPlex:** A customizable next-gen LFIA testing module that can test up to 12 conditions simultaneously.
- **Reader:** A wireless and portable LFIA test reading device with 99.9% testing accuracy.
- **App:** Besides test result data, the App also collects information such as location and time for enhanced data management.
- **Datalab:** A command and control center for optimal healthcare-surveillance to facilitate informed decision making.

## Revolutionizing Rapid Electronic Tests with Advanced Data Management

- **Test Data Analytics:** Comparing different time periods, exploring maps, displaying real-time results and evaluating health data in various views
- **Supply Data:** Manage and track Reader and kPlex inventory
- **Lab Data Management:** Integration and connectivity with LIMS (Laboratory Information Management System) to the MONDIALAB platform for potential enhanced diagnostic data management
- **Health Data Sharing:** Mondialab adheres to Health Level Seven (HL7) standards for transfer (using FHIR API) of clinical and administrative data between software applications used by various healthcare providers
- **Data Compliance:** By implementing an Information Security Management System and working within the ISO 27001 standard, Mondialab fulfils the highest current standards regarding data protection and data management
- **Data Localization:** Mondialab platform and encrypted, private servers are implemented via established Mondialab third parties. Independent servers can be sourced and implemented upon request

## Service Structure

